



GEMINI® SL® Total Knee Replacement

Cementable – SpheroGrip™/cementless – TiCaP®/PorEx® Surface Modification

Mobile Bearing | Fixed Bearing | Fixed Bearing PS | Instruments | MIT-K® | Navigation

Presented by:



CE 0123

Waldemar Link GmbH & Co. KG

Barkhausenweg 10 · 22339 Hamburg, Germany
P.O. Box 63 05 52 · 22315 Hamburg, Germany
Tel.: +49 40 53995-0 · Fax: +49 40 5386929
E-mail: info@linkhh.de · www.linkorthopaedics.com

GEMINI® SL® Total Knee Replacement

Cementable – SpheroGrip™/cementless – TiCaP®/PorEx® Surface Modification

System Description

- 02 GEMINI® SL® Total Knee Replacement
- 06 Cementable Anchorage - SpheroGrip™
- 06 Cementless Anchorage – SMS + TiCaP®
- 07 TiCaP® Double Coating
- 07 PorEx® Surface Modification (TiNbN = Titanium Niobium Nitride)
- 08 Indications/Contraindications
- 09 MIT-K® Minimally Invasive Technique – Knee
- 09 Navigation

Implants

Femoral Components, cementable/cementless

- 10 Femoral Components: Mobile and Fixed Bearing

Tibial Components, cementable/cementless

- 11 Tibial Components: Mobile Bearing
- 12 PE Articulating Surfaces: Mobile Bearing
- 14 Tibial Components: Fixed Bearing and PS Version
- 15 PE Articulating Surfaces: Fixed Bearing

Fixed Bearing PS (Posterior Stabilized), cementable/cementless

- 17 Femoral Components: Fixed PS
- 18 PE Articulating Surfaces: Fixed PS
- 20 Taper Caps for Tibial Components, Patella Components
- 21 Prosthesis Stems for Tibial Stem Extensions, cementable/cementless

Instruments

- 22 GEMINI® SL® Instrument Set, complete
- 23 GEMINI® SL® Instrument Set, trays 1–7
- 30 Additional Instruments

Accessories/Literature

- 31 X-ray Templates
- 32 Further Information about GEMINI® SL®
- 33 Index
- Important Information

■ **GEMINI® SL® Total Knee Replacement**

The **LINK® GEMINI® Total Knee Replacement**, including implants and system-specific instruments, is part of the **LINK® SL® Knee Family concept**.

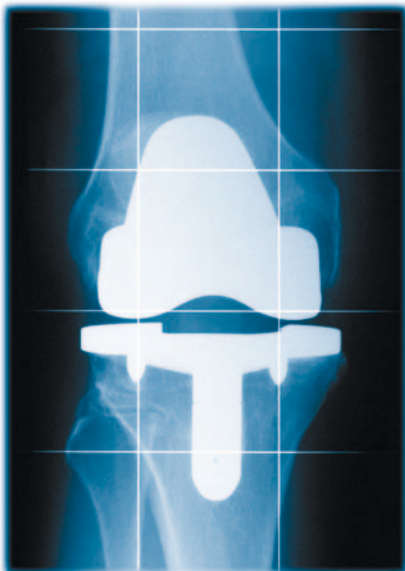
SL® stands for **S**ystem-integrated **S**o**L**ution

- **One implant system for standard implantation and revision**

Essential criteria for obtaining good results in knee arthroplasty are long-term fixation, anatomically correct implant components and a reproducible implantation technique.

The **LINK® GEMINI® SL®** knee implant for cementable or cementless primary replacement of damaged knees combines tried-and-tested and innovative design principles.

The design of the femoral and tibial components and a wide choice of sizes ensure primary stability. The tibial components are available with either a **Mobile Bearing** or a **Fixed Bearing**. The optimal surface texture and our **TiCaP® double coating** – Titanium (Ti) / Calcium Phosphate (CaP) provide secondary fixation for cementless implantation.



■ System Description

■ GEMINI® SL® Total Knee Replacement

Flexibility

The resections made for GEMINI® SL® Total Knee Replacement allow the surgeon to switch intraoperatively to the SL® rotating hinge or hinged knee implants and to use the MEGASYSTEM-C® variants if indicated, with the aid of just a few additional instruments, because each knee system within the SL® Knee Family is compatible with the very same bone resection (see page 8).

Modularity

The GEMINI® SL® product range guarantees optimal compatibility and is an excellent treatment option for the patient. A uniform femoral component for **Fixed Bearing** and **Mobile Bearing** and a different femoral component for **Fixed Bearing PS** (Posterior Stabilized) are available. A compatible PE articulating surface must be selected in each case. This gives the surgeon great intra-operative flexibility. The GEMINI® SL® system caters to a range of femoral and tibial dimensions – in general, the femoral component of the same size or one size smaller than the tibial component is used.



Femoral Components

A major contributing factor to the long-lasting function of the GEMINI® SL® system is the frictional connection between the fixation surfaces and the resected femoral condyles, and also the external form of the femoral component, which is designed to replicate the anatomy of the knee and implant function. The high patella shield prevents the patella from “clicking” in cases of patella alta. The anatomically shaped patellar groove provides for physiological tracking of the bony patella or patella resurfacing component in all positions.

The femoral component comes in two variants for cementable or cementless fixation.



■ **GEMINI® SL® Total Knee Replacement**

The **PS (Posterior Stabilized)** design with its secure coupling mechanism prevents femoral ventral subluxation in flexion in the absence of the posterior cruciate ligament. This design consists of a posterior post on the tibia and a stabilizing bar (cam) on the femoral component. The special design of the intracondylar box geometry in the femoral component allows for bone-sparing resection.



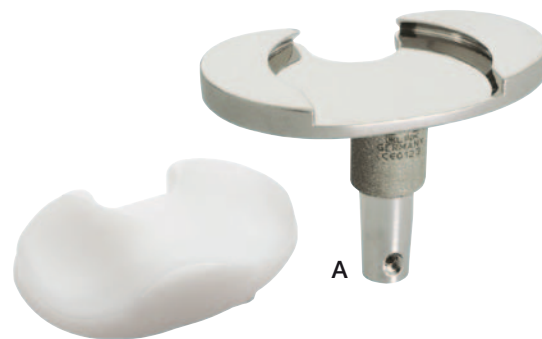
Tibial Components

The GEMINI® SL® tibial components are adapted to the anatomy of the tibial head, and left and right variants are available. The central taper and the bars radiating out toward dorsal have been shown in various tests* to protect against shear forces, rotation and, above all, the alternating varus/valgus loads that cause loosening. The tapered pegs at the ends of the bars transmit forces laterally into the load-bearing cortical bone.



The product line with **SpheroGrip™** permits tibial replacement with a monobloc tibial component. The integrated stem shape ensures a high degree of stability.

The concave surface of mobile bearing tibial plateau (**A**) provides congruency of the articulating surfaces in extension while allowing the femoral condyles to glide in increasing flexion. Distribution of the load over a large area reduces polyethylene wear. The rotating articulating surface separates function from movement in the articulating areas, enabling the soft tissue structures to take over motion control, which allows for natural kinematics. In addition, the implant fixation is spared. **The deep trough in the tibial plateau stabilizes the knee, even in cases of posterior cruciate ligament deficiency.****



* Fabriciani C. et al.: "Total Knee Arthroplasty, Tibial Components: Design and Surfaces", Cementless Arthroplasty, M. D'Arienzo, R. Civinni, B. Pavolini, Aulo Gaggi Editore, Bologna
 Crownshield R.D., Murase K., Pedersen D.R.: "An analysis of tibial component design in total knee arthroplasty". Presented at the 28th Annual ORS, New Orleans, Jan 19-21, 1982
 Walker P.S. et al.: "Fixation of Tibial Components of Knee Prostheses", JBJS 63-A, No.2, 1981, pp. 258-267
 Walker P.S., Hu-Ping Hsu, Zimmermann R.A.: "A comparative study of uncemented tibial components", J. of Arthrop., Vol. 5, No. 3, 1990, pp. 248

** Christine S. Heim, BSc, Paul D. Postak, BSc, Nicholas A. Plaxton, MS, A. Seth Greenwald, DPhil (Oxon): "Classification of Mobile-Bearing Knee Designs: Mobility and Constraint", The JBJS (American) 83:S32-37 (2001)

■ System Description

■ GEMINI® SL® Total Knee Replacement

In cases of good joint stability, where the ligaments and capsule are intact, a tibial tray with a replaceable fixed bearing PE articulating surface is available (B).

Note: The size of the tibial plateau is determined primarily by the femoral component.

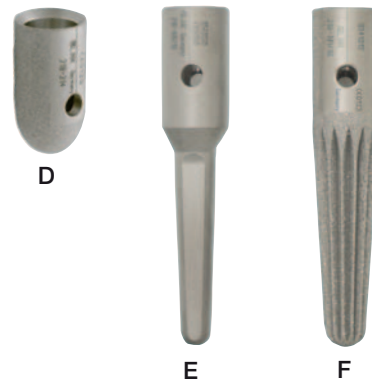


In the absence of the posterior cruciate ligament, function is assured by the post coupling mechanism. This induces **mechanical rollback** while preventing dorsal subluxation of the tibia. Ventrally, the PS (Posterior Stabilized) polyethylene articulating surface (C) has a deep cutout to give the extension apparatus enough space in flexion.

Taper Cap/Prosthesis Stems

The following options are available in case of instability or poor bone conditions to improve the stability:

- taper cap (D)
- cementable stem (E)
- cementless stem (F)



■ **GEMINI[®] SL[®] Total Knee Replacement**

Anchorage

The bone-contact surface of the implants is optimized to suit the individual type of anchorage (cementable or cementless).

Cementable Anchorage - SpheroGrip[™]

The unique macrostructure provides an optimal interface between bone cement and implant. The shear and rotational forces transmitted into the bone cement are reduced, thus ensuring stable long-term anchoring of the implant.



Cementless Anchorage – SMS + TiCaP[®]

The bone contact surfaces on the tibial and femoral components have an **SMS** (Squarical Monobloc Structure) honeycomb macrostructure for cementable fixation. For cementless fixation, implants with **TiCaP[®] double coating** – Titan (Ti)/Calcium Phosphate (CaP) are available.



This double coating creates an outstanding potential for biological exchange between bone and implant surface.

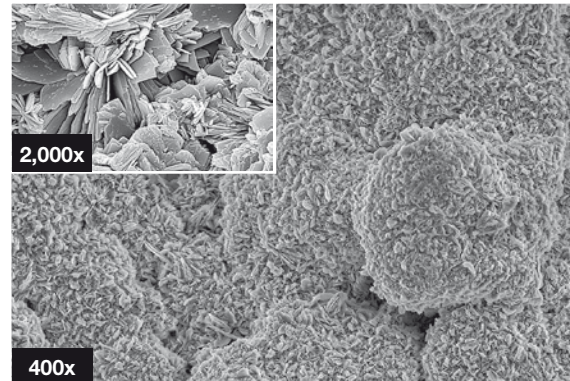
■ System Description

■ GEMINI® SL® Total Knee Replacement

TiCaP® Double Coating:

Titanium (Ti)/Calcium Phosphate (CaP)

The TiCaP® coating is applied to implants by first spraying a highly porous layer of titanium approximately 200 µm* thick onto the surface of the implant using vacuum plasma technology. On top of this porous surface, an approx. 20 µm** thick layer of mechanically stable calcium phosphate is deposited in an electrochemical process, which promotes ingrowth into the open-cell titanium layer. Animal experiments have demonstrated ingrowth on 47.9% of the implant surface.**



* The thickness of the titanium layers varies in different types of implant.

** Cunningham HB,W et al.: "General Principles of Total Disc Replacement Arthroplasty", Spine, Vol. 28, No. 20 Supplement, 2003

PorEx® (TiNbN = Titanium Niobium Nitride) Surface Modification

The PorEx® hypoallergenic surface modification leads to a ceramic-like surface, which significantly reduces the release of ions and can improve tolerance in patients who are sensitive to metal.¹

This surface is extremely hard and possesses abrasion properties similar to those of ceramics. These qualities and the wetting angle of the surface give it a low friction coefficient when in contact with fluids.¹

¹ Internal technical report.



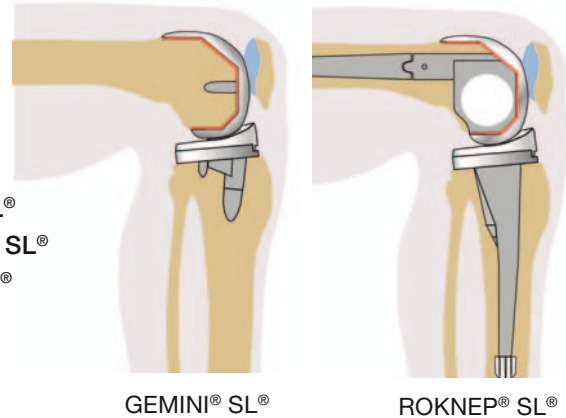
■ **GEMINI[®] SL[®] Total Knee Replacement**

Resections compatible with Endo-Model[®] SL[®] rotating and hinge knee

The tibial and femoral resections for sizes 2, 3 and 4 of the LINK[®] GEMINI[®] SL[®] Total Knee Replacement are identical to those required for the corresponding sizes of Endo-Model[®] SL[®] rotating hinge knee:

- Size **2 GEMINI[®] SL[®]** corresponds to size **small ROKNEP[®] SL[®]**
- Size **3 GEMINI[®] SL[®]** corresponds to size **medium ROKNEP[®] SL[®]**
- Size **4 GEMINI[®] SL[®]** corresponds to size **large ROKNEP[®] SL[®]**

After resection of the femur (for which the additional instrument set 16-0001/02, Endo-Model[®] SL[®] rotating knee is necessary), it is possible to switch intraoperatively or revise with the SL[®] constrained total knee system.



GEMINI[®] SL[®]

ROKNEP[®] SL[®]

■ **Indications/Contraindications**

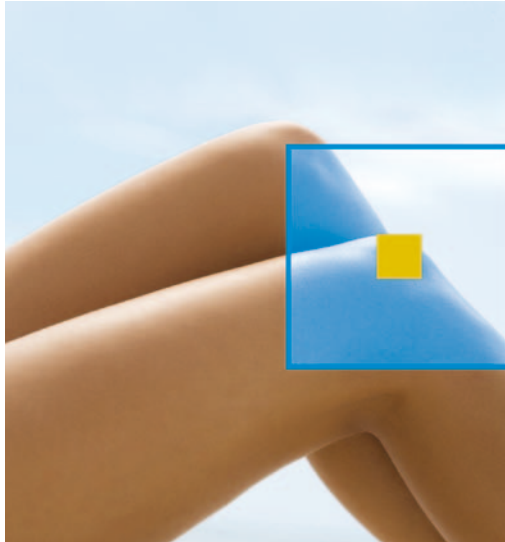
Note:

For specified indications/contraindications, see catalogs:

- 737_GEMINI[®] SL[®] Total Knee Replacement, Surgical Technique

■ System Description

■ MIT-K® Minimally Invasive Technique – Knee



- Accurate and preserving
- Precise, tissue-sparing implantation

The success of total knee arthroplasty depends upon:

- **Correct alignment** of the leg axis
- **Good soft-tissue balancing**
- **Stable primary fixation** of the implant

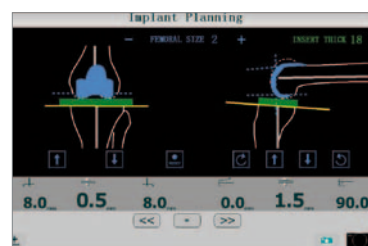
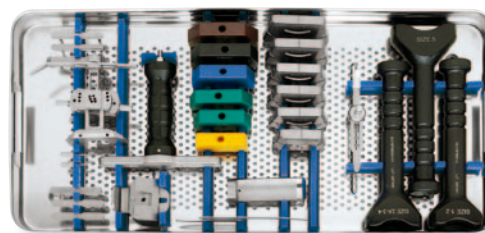
The **MIT-K® Minimally Invasive Technique – Knee** presents a tissue-sparing surgical technique for implanting the **GEMINI® SL®** prosthesis via a small incision. This leads to less blood loss, both during and after surgery, while preserving muscles, tendons and ligaments. The risk of infection and embolism is reduced, wound healing is improved, and the patient recovers faster.

■ Navigation

The **LINK® GEMINI® SL® Total Knee Replacement** is navigable with the imaging-free navigation **BLU-IGS (Orthokey)**.

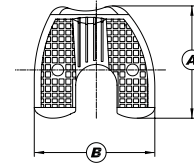
The newly developed, state-of-the-art instrument set and the optional **computer-assisted navigation system BLU-IGS** facilitate precise alignment of the axes and positioning of the resection guides. The instruments are compact, so they do not impinge on surrounding soft tissue.

These features enable the surgeon to ensure that the patient gets the maximum life from the artificial joint, optimal implant function, and the minimally invasive technique provides short convalescence.



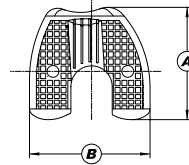
GEMINI® SL® Femoral Components – MOBILE
to use with Mobile and Fixed Bearing

cementable



Item no. CoCrMo	Item no. CoCrMo SpheroGrip™	Item no. CoCrMo/PorEx®**	Size	Side	A mm	B mm	Identifi- cation
318-102/01	318-402/01	318-206/01	x-small	right	52	55	R1
318-102/16	318-402/16	318-206/16	x-small plus	right	55	62	R1B
318-102/02	318-402/02	318-206/02	small	right	59	62	R2
318-102/25	318-402/25	318-206/25	medium small	right	59	69	R2A
318-102/26	318-402/26	318-206/26	medium small plus	right	62	69	R2B
318-102/03	318-402/03	318-206/03	medium	right	65	69	R3
318-102/04	318-402/04	318-206/04	large	right	67	72	R4
318-102/05	318-402/05	318-206/05	x-large	right	72	76	R5
318-103/01	318-403/01	318-207/01	x-small	left	52	55	L1
318-103/16	318-403/16	318-207/16	x-small plus	left	55	62	L1B
318-103/02	318-403/02	318-207/02	small	left	59	62	L2
318-103/25	318-403/25	318-207/25	medium small	left	59	69	L2A
318-103/26	318-403/26	318-207/26	medium small plus	left	62	69	L2B
318-103/03	318-403/03	318-207/03	medium	left	65	69	L3
318-103/04	318-403/04	318-207/04	large	left	67	72	L4
318-103/05	318-403/05	318-207/05	x-large	left	72	76	L5

cementless



Item no. CoCrMo TiCaP®***	Item no. CoCrMo/PorEx®** TiCaP®***	Size	Side	A mm	B mm	Identifi- cation
318-204/01	318-208/01	x-small	right	52	55	R1
318-204/16	318-208/16	x-small plus	right	55	62	R1B
318-204/02	318-208/02	small	right	59	62	R2
318-204/25	318-208/25	medium small	right	59	69	R2A
318-204/26	318-208/26	medium small plus	right	62	69	R2B
318-204/03	318-208/03	medium	right	65	69	R3
318-204/04	318-208/04	large	right	67	72	R4
318-204/05	318-208/05	x-large	right	72	76	R5
318-205/01	318-209/01	x-small	left	52	55	L1
318-205/16	318-209/16	x-small plus	left	55	62	L1B
318-205/02	318-209/02	small	left	59	62	L2
318-205/25	318-209/25	medium small	left	59	69	L2A
318-205/26	318-209/26	medium small plus	left	62	69	L2B
318-205/03	318-209/03	medium	left	65	69	L3
318-205/04	318-209/04	large	left	67	72	L4
318-205/05	318-209/05	x-large	left	72	76	L5

* also to be used with tibial components: Fixed Bearing, page 14.

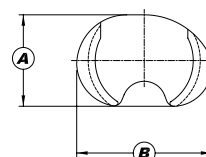
** PorEx®: TiNbN = Titanium Niobium Nitride; hypoallergenic coating (gold color).

*** TiCaP® double coating: Titan/Calcium Phosphate (CaP).

■ Implants

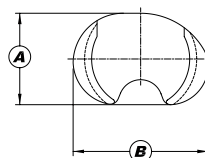
■ GEMINI® SL® Tibial Components – MOBILE to use with Mobile Bearing

cementable



Item no. CoCrMo	Item no. CoCrMo SpheroGrip™	Item no. CoCrMo/PorEx®**	Size	Side	A mm	B mm	Identi- fication
318-312/01	318-452/01	318-324/01	x-small	right	42	62	R1
318-312/02	318-452/02	318-324/02	small	right	46	69	R2
318-312/03	318-452/03	318-324/03	medium	right	47	74	R3
318-312/04	318-452/04	318-324/04	large	right	53	78	R4
318-312/05	318-452/05	318-324/05	x-large	right	56	85	R5
318-313/01	318-453/01	318-325/01	x-small	left	42	62	L1
318-313/02	318-453/02	318-325/02	small	left	46	69	L2
318-313/03	318-453/03	318-325/03	medium	left	47	74	L3
318-313/04	318-453/04	318-325/04	large	left	53	78	L4
318-313/05	318-453/05	318-325/05	x-large	left	56	85	L5

cementless

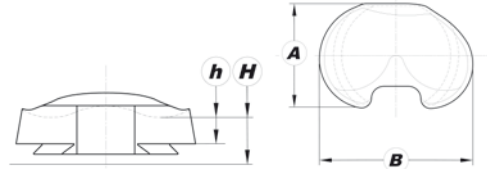


Item no. CoCrMo TiCaP®***	Item no. CoCrMo/PorEx®** TiCaP®***	Size	Side	A mm	B mm	Identi- fication
318-316/01	318-326/01	x-small	right	42	62	R1
318-316/02	318-326/02	small	right	46	69	R2
318-316/03	318-326/03	medium	right	47	74	R3
318-316/04	318-326/04	large	right	53	78	R4
318-316/05	318-326/05	x-large	right	56	85	R5
318-317/01	318-327/01	x-small	left	42	62	L1
318-317/02	318-327/02	small	left	46	69	L2
318-317/03	318-327/03	medium	left	47	74	L3
318-317/04	318-327/04	large	left	53	78	L4
318-317/05	318-327/05	x-large	left	56	85	L5

** PorEx®: TiNbN = Titanium Niobium Nitride; hypoallergenic coating (gold color).

*** TiCaP® double coating: Titan/Calcium Phosphate (CaP).

■ **GEMINI® SL® Tibial Components – MOBILE**
to used with Mobile Bearing



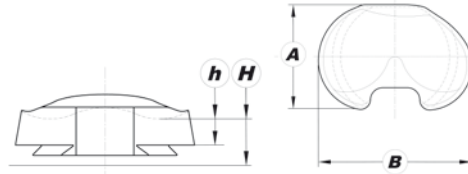
PE Articulating Surfaces (Mobile)

Item no. UHMWPE	Size	Side	H mm	h mm	A mm	B mm	Identi- fication
318-431/12	x-small	right	12	5	42	62	R1
318-438/12	x-small plus	right	12	5	46	69	R1B
318-432/12	small	right	12	5	46	69	R2
318-437/12	medium small	right	12	5	47	74	R2A
	medium small plus						R2B
318-433/12	medium	right	12	5	47	74	R3
318-434/12	large	right	12	5	53	78	R4
318-435/12	x-large	right	12	5	56	85	R5
318-441/12	x-small	left	12	5	42	62	L1
318-448/12	x-small plus	left	12	5	46	69	L1B
318-442/12	small	left	12	5	46	69	L2
318-447/12	medium small	left	12	5	47	74	L2A
	medium small plus						L2B
318-443/12	medium	left	12	5	47	74	L3
318-444/12	large	left	12	5	53	78	L4
318-445/12	x-large	left	12	5	56	85	L5
318-431/14	x-small	right	14	7	42	62	R1
318-438/14	x-small plus	right	14	7	46	69	R1B
318-432/14	small	right	14	7	46	69	R2
318-437/14	medium small	right	14	7	47	74	R2A
	medium small plus						R2B
318-433/14	medium	right	14	7	47	74	R3
318-434/14	large	right	14	7	53	78	R4
318-435/14	x-large	right	14	7	56	85	R5
318-441/14	x-small	left	14	7	42	62	L1
318-448/14	x-small plus	left	14	7	46	69	L1B
318-442/14	small	left	14	7	46	69	L2
318-447/14	medium small	left	14	7	47	74	L2A
	medium small plus						L2B
318-443/14	medium	left	14	7	47	74	L3
318-444/14	large	left	14	7	53	78	L4
318-445/14	x-large	left	14	7	56	85	L5
318-431/16	x-small	right	16	9	42	62	R1
318-438/16	x-small plus	right	16	9	46	69	R1B
318-432/16	small	right	16	9	46	69	R2
318-437/16	medium small	right	16	9	47	74	R2A
	medium small plus						R2B
318-433/16	medium	right	16	9	47	74	R3
318-434/16	large	right	16	9	53	78	R4
318-435/16	x-large	right	16	9	56	85	R5

further implant sizes on next page...

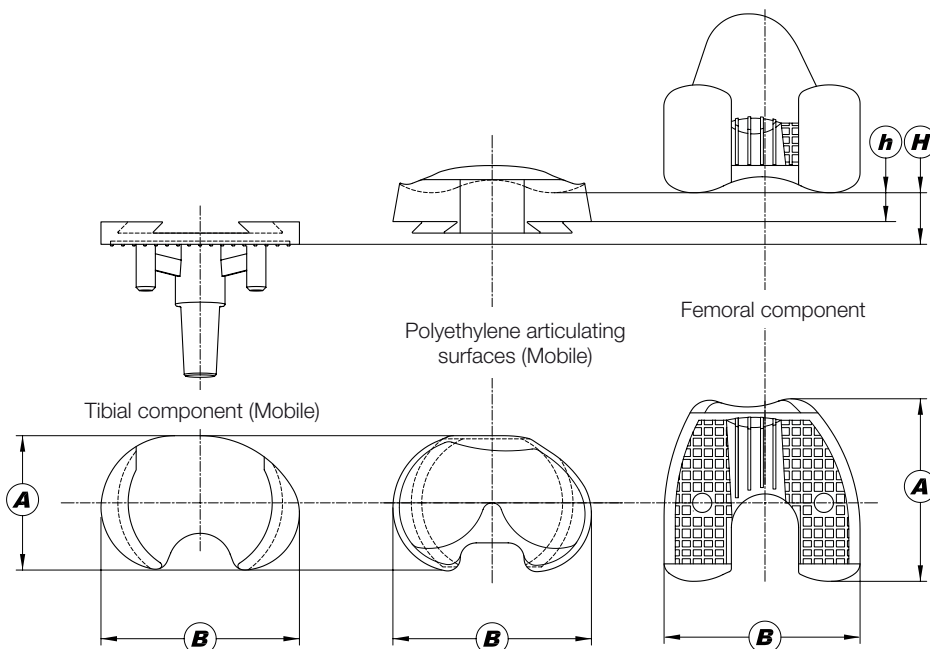
■ Implants

■ GEMINI® SL® Tibial Components – MOBILE to used with Mobile Bearing



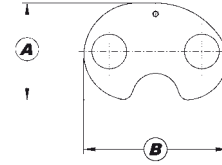
PE Articulating Surfaces (Mobile)

Item no. UHMWPE	Size	Side	H mm	h mm	A mm	B mm	Identi- fication
318-441/16	x-small	left	16	9	42	62	L1
318-448/16	x-small plus	left	16	9	46	69	L1B
318-442/16	small	left	16	9	46	69	L2
318-447/16	medium small medium small plus	left	16	9	47	74	L2A L2B
318-443/16	medium	left	16	9	47	74	L3
318-444/16	large	left	16	9	53	78	L4
318-445/16	x-large	left	16	9	56	85	L5
318-431/18	x-small	right	18	11	42	62	R1
318-438/18	x-small plus	right	18	11	46	69	R1B
318-432/18	small	right	18	11	46	69	R2
318-437/18	medium small medium small plus	right	18	11	47	74	R2A R2B
318-433/18	medium	right	18	11	47	74	R3
318-434/18	large	right	18	11	53	78	R4
318-435/18	x-large	right	18	11	56	85	R5
318-441/18	x-small	left	18	11	42	62	L1
318-448/18	x-small plus	left	18	11	46	69	L1B
318-442/18	small	left	18	11	46	69	L2
318-447/18	medium small medium small plus	left	18	11	47	74	L2A L2B
318-443/18	medium	left	18	11	47	74	L3
318-444/18	large	left	18	11	53	78	L4
318-445/18	x-large	left	18	11	56	85	L5



GEMINI® SL® Tibial Components – FIXED*
to used with Fixed Bearing and PS (Posterior Stabilized)

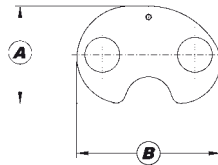
cementable



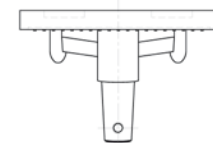
Item no. CoCrMo	Item no. CoCrMo SpheroGrip™	Item no. CoCrMo/PorEx®**	Size	Side	A mm	B mm	Identi- fication
318-372/01	318-482/01	318-328/01	x-small	right	42	62	R1
318-372/02	318-482/02	318-328/02	small	right	46	69	R2
318-372/03	318-482/03	318-328/03	medium	right	47	74	R3
318-372/04	318-482/04	318-328/04	large	right	53	78	R4
318-372/05	318-482/05	318-328/05	x-large	right	56	85	R5
318-373/01	318-483/01	318-329/01	x-small	left	42	62	L1
318-373/02	318-483/02	318-329/02	small	left	46	69	L2
318-373/03	318-483/03	318-329/03	medium	left	47	74	L3
318-373/04	318-483/04	318-329/04	large	left	53	78	L4
318-373/05	318-483/05	318-329/05	x-large	left	56	85	L5

incl. safety bolt for PE articulating surface

cementless



Item no. CoCrMo TiCaP®***	Item no. CoCrMo/PorEx®** TiCaP®***	Size	Side	A mm	B mm	Identi- fication
318-376/01	318-336/01	x-small	right	42	62	R1
318-376/02	318-336/02	small	right	46	69	R2
318-376/03	318-336/03	medium	right	47	74	R3
318-376/04	318-336/04	large	right	53	78	R4
318-376/05	318-336/05	x-large	right	56	85	R5
318-377/01	318-337/01	x-small	left	42	62	L1
318-377/02	318-337/02	small	left	46	69	L2
318-377/03	318-337/03	medium	left	47	74	L3
318-377/04	318-337/04	large	left	53	78	L4
318-377/05	318-337/05	x-large	left	56	85	L5



Taper 10/12 mm

incl. safety bolt for PE articulating surface

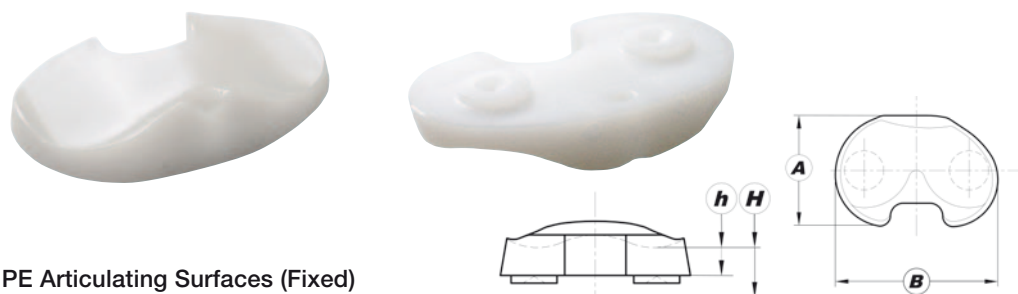
* To used with femoral components:
Mobile Bearing, page 10 and PS Version (Posterior Stabilized), page 17.

** PorEx®: TiNbN = Titanium Niobium Nitride; hypoallergenic coating (gold color).

*** TiCaP® double coating: Titan/Calcium Phosphate (CaP).

■ Implants

■ GEMINI® SL® Tibial Components – FIXED to used with Fixed Bearing

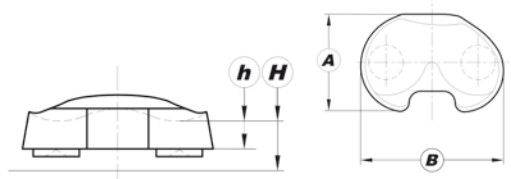


PE Articulating Surfaces (Fixed)

Item no. UHMWPE	Size	Side	H mm	h mm	A mm	B mm	Identi- fication
318-231/10	x-small	right	10	6	42	62	R1
318-238/10	x-small plus	right	10	6	46	69	R1B
318-232/10	small	right	10	6	46	69	R2
318-237/10	medium small medium small plus	right	10	6	47	74	R2A R2B
318-233/10	medium	right	10	6	47	74	R3
318-234/10	large	right	10	6	53	78	R4
318-235/10	x-large	right	10	6	56	85	R5
318-241/10	x-small	left	10	6	42	62	L1
318-248/10	x-small plus	left	10	6	46	69	L1B
318-242/10	small	left	10	6	46	69	L2
318-247/10	medium small medium small plus	left	10	6	47	74	L2A L2B
318-243/10	medium	left	10	6	47	74	L3
318-244/10	large	left	10	6	53	78	L4
318-245/10	x-large	left	10	6	56	85	L5
318-231/12	x-small	right	12	8	42	62	R1
318-238/12	x-small plus	right	12	8	46	69	R1B
318-232/12	small	right	12	8	46	69	R2
318-237/12	medium small medium small plus	right	12	8	47	74	R2A R2B
318-233/12	medium	right	12	8	47	74	R3
318-234/12	large	right	12	8	53	78	R4
318-235/12	x-large	right	12	8	56	85	R5
318-241/12	x-small	left	12	8	42	62	L1
318-248/12	x-small plus	left	12	8	46	69	L1B
318-242/12	small	left	12	8	46	69	L2
318-247/12	medium small medium small plus	left	12	8	47	74	L2A L2B
318-243/12	medium	left	12	8	47	74	L3
318-244/12	large	left	12	8	53	78	L4
318-245/12	x-large	left	12	8	56	85	L5
318-231/14	x-small	right	14	10	42	62	R1
318-238/14	x-small plus	right	14	10	46	69	R1B
318-232/14	small	right	14	10	46	69	R2
318-237/14	medium small medium small plus	right	14	10	47	74	R2A R2B
318-233/14	medium	right	14	10	47	74	R3
318-234/14	large	right	14	10	53	78	R4
318-235/14	x-large	right	14	10	56	85	R5

further implant sizes on next page...

GEMINI® SL® Tibial Components – FIXED
to used with Fixed Bearing

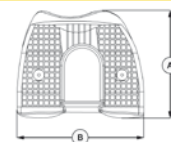


PE Articulating Surfaces (Fixed)

Item no. UHMWPE	Size	Side	H mm	h mm	A mm	B mm	Identi- fication
318-241/14	x-small	left	14	10	42	62	L1
318-248/14	x-small plus	left	14	10	46	69	L1B
318-242/14	small	left	14	10	46	69	L2
318-247/14	medium small medium small plus	left	14	10	47	74	L2A L2B
318-243/14	medium	left	14	10	47	74	L3
318-244/14	large	left	14	10	53	78	L4
318-245/14	x-large	left	14	10	56	85	L5
318-231/16	x-small	right	16	12	42	62	R1
318-238/16	x-small plus	right	16	12	46	69	R1B
318-232/16	small	right	16	12	46	69	R2
318-237/16	medium small medium small plus	right	16	12	47	74	R2A R2B
318-233/16	medium	right	16	12	47	74	R3
318-234/16	large	right	16	12	53	78	R4
318-235/16	x-large	right	16	12	56	85	R5
318-241/16	x-small	left	16	12	42	62	L1
318-248/16	x-small plus	left	16	12	46	69	L1B
318-242/16	small	left	16	12	46	69	L2
318-247/16	medium small medium small plus	left	16	12	47	74	L2A L2B
318-243/16	medium	left	16	12	47	74	L3
318-244/16	large	left	16	12	53	78	L4
318-245/16	x-large	left	16	12	56	85	L5
318-231/18	x-small	right	18	14	42	62	R1
318-238/18	x-small plus	right	18	14	46	69	R1B
318-232/18	small	right	18	14	46	69	R2
318-237/18	medium small medium small plus	right	18	14	47	74	R2A R2B
318-233/18	medium	right	18	14	47	74	R3
318-234/18	large	right	18	14	53	78	R4
318-235/18	x-large	right	18	14	56	85	R5
318-241/18	x-small	left	18	14	42	62	L1
318-248/18	x-small plus	left	18	14	46	69	L1B
318-242/18	small	left	18	14	46	69	L2
318-247/18	medium small medium small plus	left	18	14	47	74	L2A L2B
318-243/18	medium	left	18	14	47	74	L3
318-244/18	large	left	18	14	53	78	L4
318-245/18	x-large	left	18	14	56	85	L5

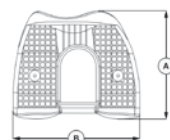
Implants

cementable



Item no. CoCrMo	Item no. CoCrMo SpheroGrip™	Item no. CoCrMo/PorEx®**	Size	Side	A mm	B mm	Identi- fication
318-112/01	318-412/01	318-214/01	x-small	right	52	55	R1
318-112/16	318-412/16	318-214/16	x-small plus	right	55	62	R1B
318-112/02	318-412/02	318-214/02	small	right	59	62	R2
318-112/25	318-412/25	318-214/25	medium small	right	59	69	R2A
318-112/26	318-412/26	318-214/26	medium small plus	right	62	69	R2B
318-112/03	318-412/03	318-214/03	medium	right	65	69	R3
318-112/04	318-412/04	318-214/04	large	right	67	72	R4
318-112/05	318-412/05	318-214/05	x-large	right	72	76	R5
318-113/01	318-413/01	318-215/01	x-small	left	52	55	L1
318-113/16	318-413/16	318-215/16	x-small plus	left	55	62	L1B
318-113/02	318-413/02	318-215/02	small	left	59	62	L2
318-113/25	318-413/25	318-215/25	medium small	left	59	69	L2A
318-113/26	318-413/26	318-215/26	medium small plus	left	62	69	L2B
318-113/03	318-413/03	318-215/03	medium	left	65	69	L3
318-113/04	318-413/04	318-215/04	large	left	67	72	L4
318-113/05	318-413/05	318-215/05	x-large	left	72	76	L5

cementless

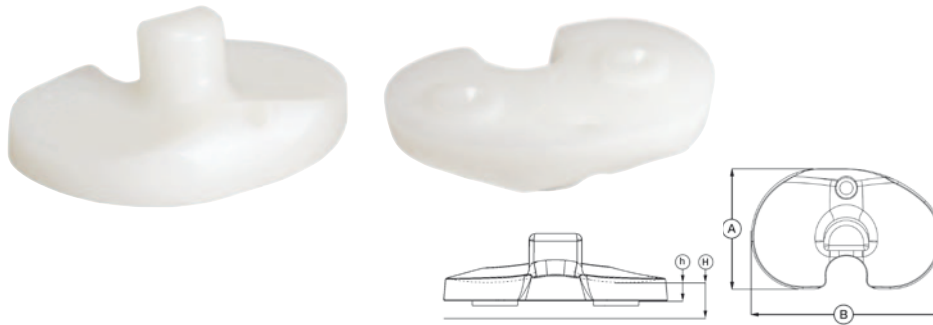


Item no. CoCrMo TiCaP®***	Item no. CoCrMo/PorEx®** TiCaP®***	Size	Side	A mm	B mm	Identi- fication
318-212/01	318-216/01	x-small	right	52	55	R1
318-212/16	318-216/16	x-small plus	right	55	62	R1B
318-212/02	318-216/02	small	right	59	62	R2
318-212/25	318-216/25	medium small	right	59	69	R2A
318-212/26	318-216/26	medium small plus	right	62	69	R2B
318-212/03	318-216/03	medium	right	65	69	R3
318-212/04	318-216/04	large	right	67	72	R4
318-212/05	318-216/05	x-large	right	72	76	R5
318-213/01	318-217/01	x-small	left	52	55	L1
318-213/16	318-217/16	x-small plus	left	55	62	L1B
318-213/02	318-217/02	small	left	59	62	L2
318-213/25	318-217/25	medium small	left	59	69	L2A
318-213/26	318-217/26	medium small plus	left	62	69	L2B
318-213/03	318-217/03	medium	left	65	69	L3
318-213/04	318-217/04	large	left	67	72	L4
318-213/05	318-217/05	x-large	left	72	76	L5

** PorEx®: TiNbN = Titanium Niobium Nitride; hypoallergenic coating (gold color).

*** TiCaP® double coating: Titan/Calcium Phosphate (CaP).

■ **GEMINI® SL® Tibial Components – PS**
to used with PS (Posterior Stabilized)



PE Articulating Surfaces (PS)*

Item no. UHMWPE	Size	Side	H mm	h mm	A mm	B mm	Identi- fication
318-251/10	x-small	right	10	6	42	62	R1
318-258/10	x-small plus	right	10	6	46	69	R1B
318-252/10	small	right	10	6	46	69	R2
318-256/10	medium small medium small plus	right	10	6	47	74	R2A R2B
318-253/10	medium	right	10	6	47	74	R3
318-254/10	large	right	10	6	53	78	R4
318-255/10	x-large	right	10	6	56	85	R5
318-261/10	x-small	left	10	6	42	62	L1
318-268/10	x-small plus	left	10	6	46	69	L1B
318-262/10	small	left	10	6	46	69	L2
318-266/10	medium small medium small plus	left	10	6	47	74	L2A L2B
318-263/10	medium	left	10	6	47	74	L3
318-264/10	large	left	10	6	53	78	L4
318-265/10	x-large	left	10	6	56	85	L5
318-251/12	x-small	right	12	8	42	62	R1
318-258/12	x-small plus	right	12	8	46	69	R1B
318-252/12	small	right	12	8	46	69	R2
318-256/12	medium small medium small plus	right	12	8	47	74	R2A R2B
318-253/12	medium	right	12	8	47	74	R3
318-254/12	large	right	12	8	53	78	R4
318-255/12	x-large	right	12	8	56	85	R5
318-261/12	x-small	left	12	8	42	62	L1
318-268/12	x-small plus	left	12	8	46	69	L1B
318-262/12	small	left	12	8	46	69	L2
318-266/12	medium small medium small plus	left	12	8	47	74	L2A L2B
318-263/12	medium	left	12	8	47	74	L3
318-264/12	large	left	12	8	53	78	L4
318-265/12	x-large	left	12	8	56	85	L5

* To used with tibial components (FIXED), page 14

[further implant sizes on next page...](#)

■ Implants

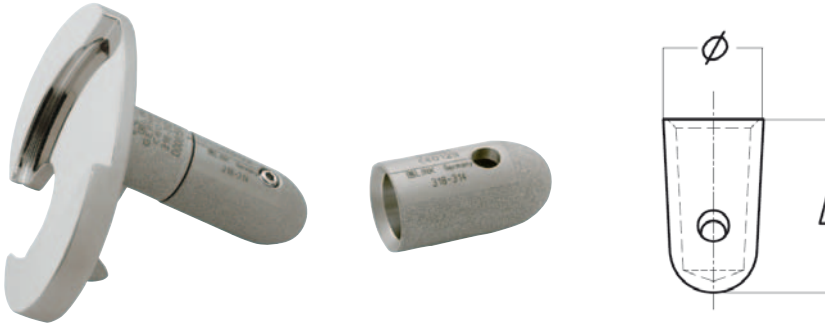
■ GEMINI® SL® Tibial Components – PS to used with PS (Posterior Stabilized)

PE Articulating Surfaces (PS)*

Item no. UHMWPE	Size	Side	H mm	h mm	A mm	B mm	Identi- fication
318-251/14	x-small	right	14	10	42	62	R1
318-258/14	x-small plus	right	14	10	46	69	R1B
318-252/14	small	right	14	10	46	69	R2
318-256/14	medium small medium small plus	right	14	10	47	74	R2A R2B
318-253/14	medium	right	14	10	47	74	R3
318-254/14	large	right	14	10	53	78	R4
318-255/14	x-large	right	14	10	56	85	R5
318-261/14	x-small	left	14	10	42	62	L1
318-268/14	x-small plus	left	14	10	46	69	L1B
318-262/14	small	left	14	10	46	69	L2
318-266/14	medium small medium small plus	left	14	10	47	74	L2A L2B
318-263/14	medium	left	14	10	47	74	L3
318-264/14	large	left	14	10	53	78	L4
318-265/14	x-large	left	14	10	56	85	L5
318-251/16	x-small	right	16	12	42	62	R1
318-258/16	x-small plus	right	16	12	46	69	R1B
318-252/16	small	right	16	12	46	69	R2
318-256/16	medium small medium small plus	right	16	12	47	74	R2A R2B
318-253/16	medium	right	16	12	47	74	R3
318-254/16	large	right	16	12	53	78	R4
318-255/16	x-large	right	16	12	56	85	R5
318-261/16	x-small	left	16	12	42	62	L1
318-268/16	x-small plus	left	16	12	46	69	L1B
318-262/16	small	left	16	12	46	69	L2
318-266/16	medium small medium small plus	left	16	12	47	74	L2A L2B
318-263/16	medium	left	16	12	47	74	L3
318-264/16	large	left	16	12	53	78	L4
318-265/16	x-large	left	16	12	56	85	L5
318-251/18	x-small	right	18	14	42	62	R1
318-258/18	x-small plus	right	18	14	46	69	R1B
318-252/18	small	right	18	14	46	69	R2
318-256/18	medium small medium small plus	right	18	14	47	74	R2A R2B
318-253/18	medium	right	18	14	47	74	R3
318-254/18	large	right	18	14	53	78	R4
318-255/18	x-large	right	18	14	56	85	R5
318-261/18	x-small	left	18	14	42	62	L1
318-268/18	x-small plus	left	18	14	46	69	L1B
318-262/18	small	left	18	14	46	69	L2
318-266/18	medium small medium small plus	left	18	14	47	74	L2A L2B
318-263/18	medium	left	18	14	47	74	L3
318-264/18	large	left	18	14	53	78	L4
318-265/18	x-large	left	18	14	56	85	L5

* To used with tibial components (FIXED), page 14

■ **GEMINI® SL® Total Knee Replacement**



Taper Caps for tibial components

cementable

Item no.	CoCrMo
318-314	Ø 16 mm, length (L) 28 mm

cementless

Item no.	with TiCaP® * CoCrMo
318-314/01	Ø 16 mm, length (L) 28 mm

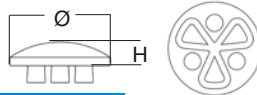
Item no.	Tilastan®
318-315	Ø 16 mm, length (L) 28 mm

The taper of the tibial component for coupling with modular stems can be covered with the taper cap, thus providing a short prosthesis stem (overall length = 49 mm). The cap is fixed to the taper by means of a hex screw using hex screwdriver 64-1181/06 (hex. 2.0 mm). The cap is provided separately in sterile packaging.

* TiCaP® double coating: Titan (Ti)/Calcium Phosphate (CaP)



Patella Resurfacing Components, 3-peg



Item no.	Size	Ø mm	Height mm
318-401/25	1	25	7
318-401/28	2	28	8
318-401/31	3	31	9
318-401/34	4	34	10



Instrument set for patella components available on request.

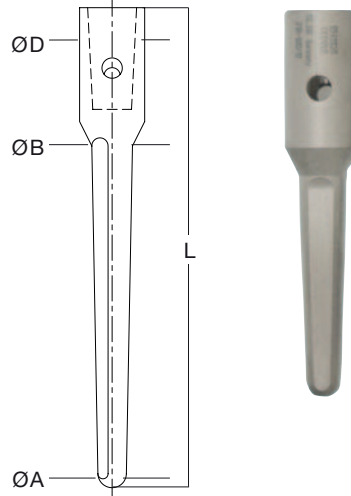
■ Implants

■ GEMINI® SL® Total Knee Replacement

Prosthesis Stems for tibial stem extensions

cementable

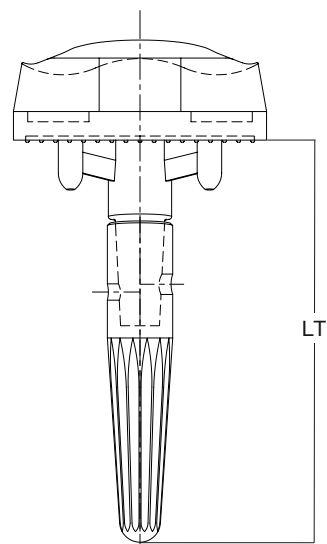
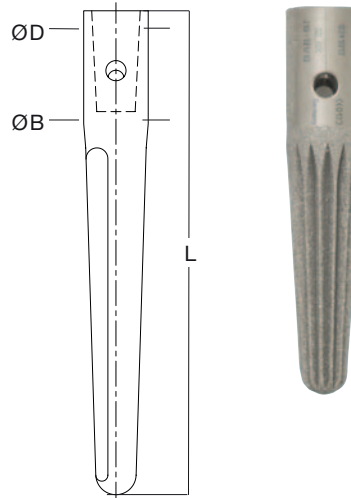
Item no.	Tilastan®				
	Ø A mm	Ø B mm	Ø D mm	L mm	LT mm
318-190/07	7	10	16	50	70
318-190/10	7	10	16	80	100
318-190/14	7	10	16	120	140



Prosthesis Stems for tibial stem extensions

cementless

Item no.	Tilastan®				
	Ø A mm	Ø B mm	Ø D mm	L mm	LT mm
318-191/07	10	16	16	50	70
318-191/10	10	16	16	80	100
318-191/14	10	16	16	120	140



System Description

Indications
Contraindications

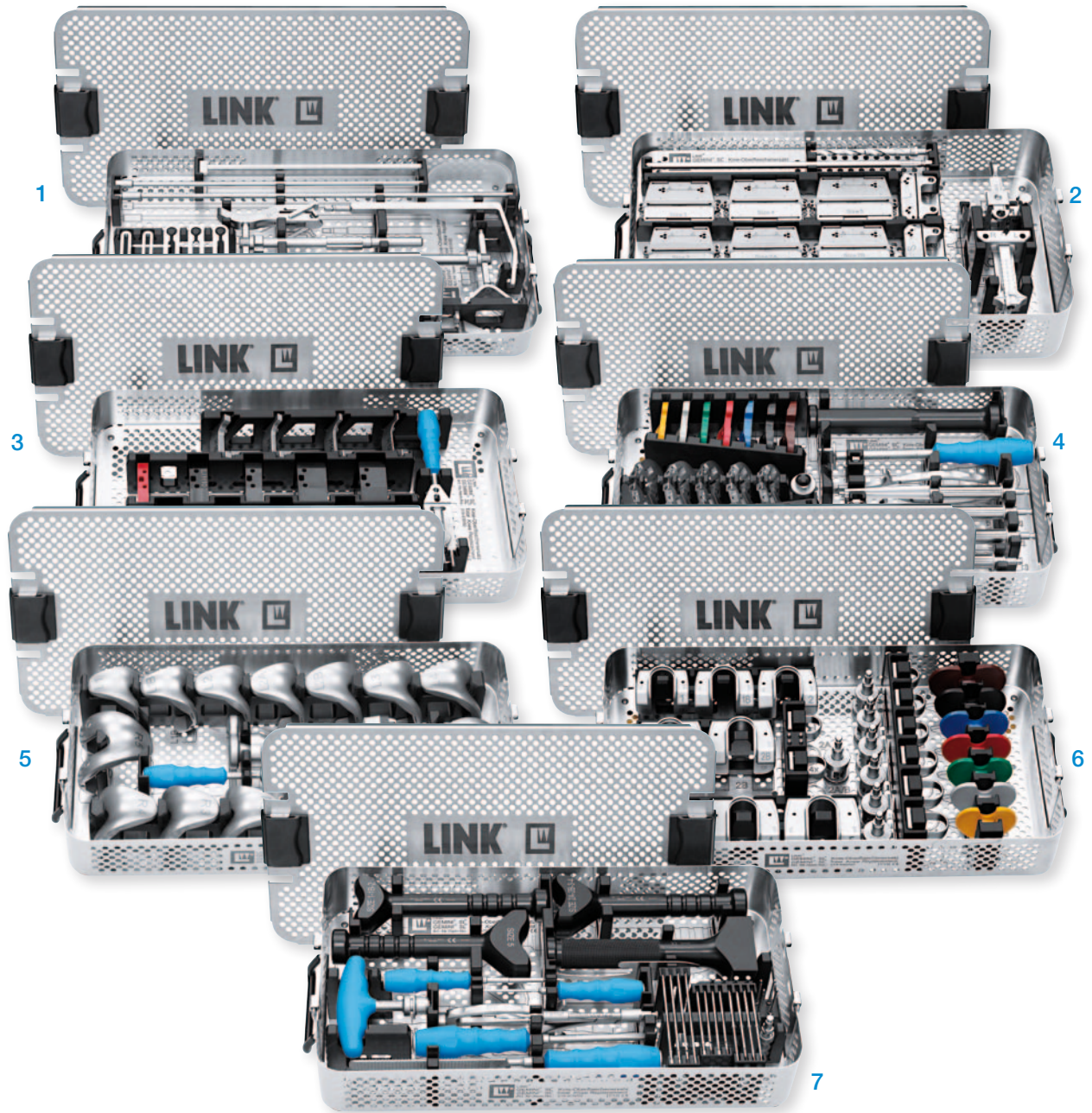
Implants

Instruments

Accessories
Literature

Index

■ GEMINI® SL® Instrument Set

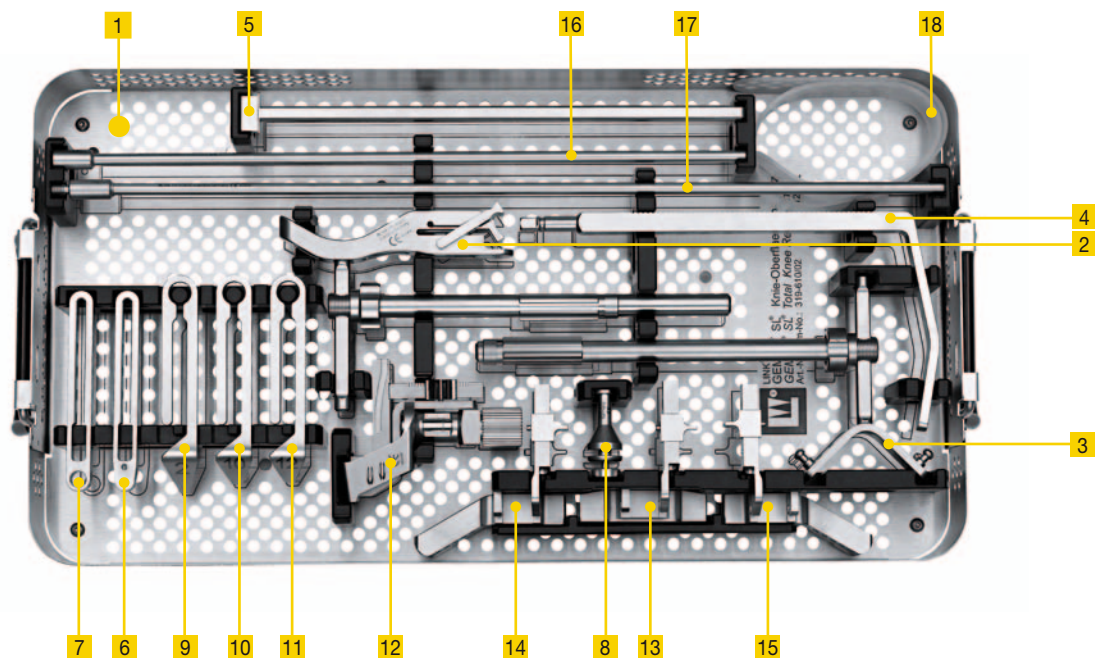


Item no.	GEMINI® SL® Instrument Sets
	consisting of:
319-010/02	Instrument Tray 1 – Tibia Resection
319-020/02	Instrument Tray 2 – Femoral Preparation
319-030/02	Instrument Tray 3 – Spacer
319-040/02	Instrument Tray 4 – Tibia Preparation
319-050/02	Instrument Tray 5 – Femoral Trial Prostheses
319-060/02	Instrument Tray 6 – Femoral PS Preparation
319-070/02	Instrument Tray 7 – General Instruments

Instruments

GEMINI® SL® Instrument Set

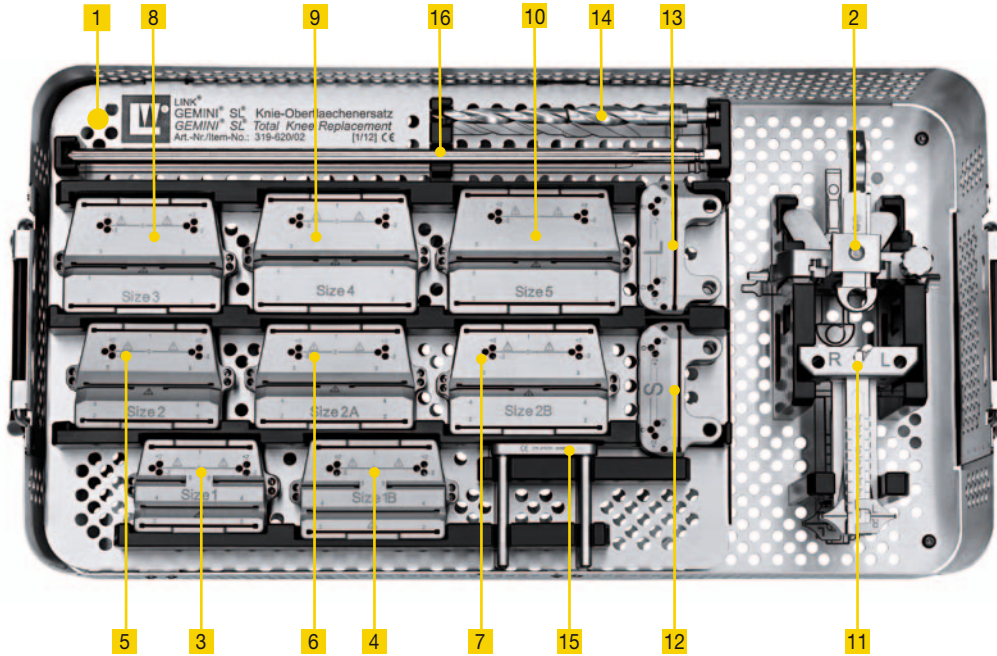
319-010/02 Instrument Tray 1 – Tibia Resection



1	319-610/02	Instrument Tray 1, empty, 485 x 253 x 80 mm
2	319-100/01	Foot Clamp, ratchet mechanism
3	319-160/00	Foot Clamp, silicon belt connection
4	319-105/00	Positioning Guide
5	319-110/01	EM Alignment Rod
6	319-115/01	Fixation Jig, extramedullary
7	319-165/00	Fixation Jig, intramedullary
8	319-120/01	Guide
9	319-125/01	Stylus (2 mm)
10	319-130/01	Stylus (10 mm)
11	319-135/01	Stylus (12 mm)
12	319-140/01	Tibial Base Guide
13	319-145/01	Tibial Plateau (symmetrical), right and left
14	319-150/01	Tibial Plateau (asymmetrical), right
15	319-155/01	Tibial Plateau (asymmetrical), left
16	319-520/01	Alignment Rod, extramedullary (female thread)
17	319-525/00	Alignment Rod, extramedullary (external thread)
18	317-538/01	Plastic Connector

■ **GEMINI[®] SL[®] Instrument Set**

319-020/02 Instrument Tray 2 – Femoral Preparation

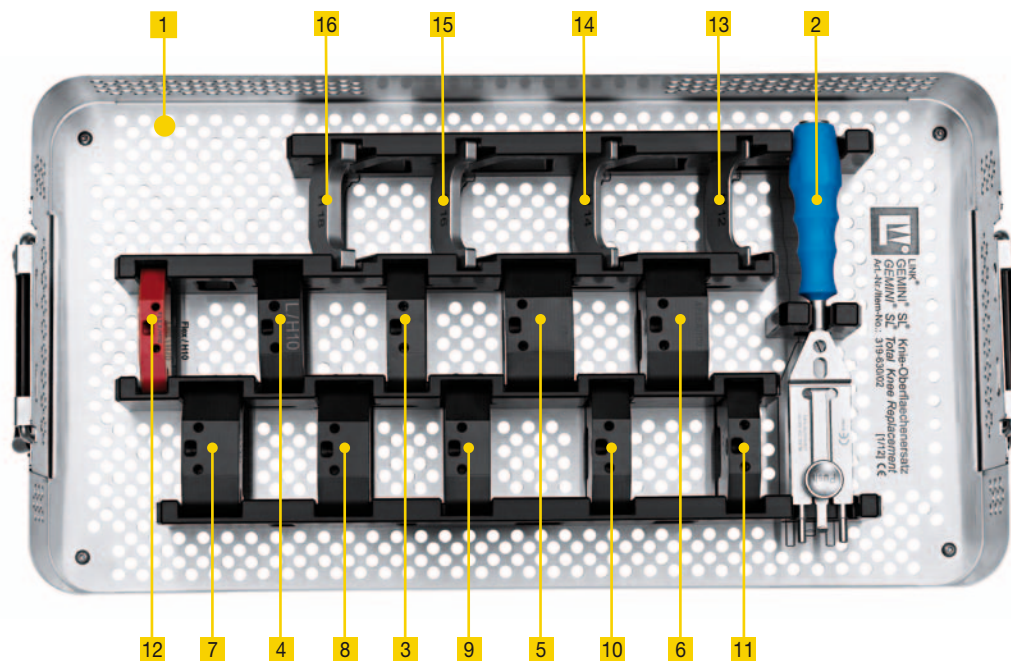


1	319-620/02	Instrument Tray 2 , empty, 485 x 253 x 120 mm
2	319-200/01	Femoral Sizing and Rotation Alignment Instrument
Cutting Blocks		
3	319-202/01	for size 1
4	319-202/16	for size 1B
5	319-202/02	for size 2
6	319-202/25	for size 2A
7	319-202/26	for size 2B
8	319-202/03	for size 3
9	319-202/04	for size 4
10	319-202/05	for size 5
11	319-210/00	IM Alignment Instrument , femoral varus/valgus adjustment
12	319-215/00	Cutting Block , distal femur cut „S“
13	319-220/00	Cutting Block , distal femur cut „L“
14	319-505/00B	Step Drill , intramedullary canal opening
15	319-211/01	Guide U-Bolt
16	319-510/00	Guide Rod , intramedullary

Instruments

GEMINI® SL® Instrument Set

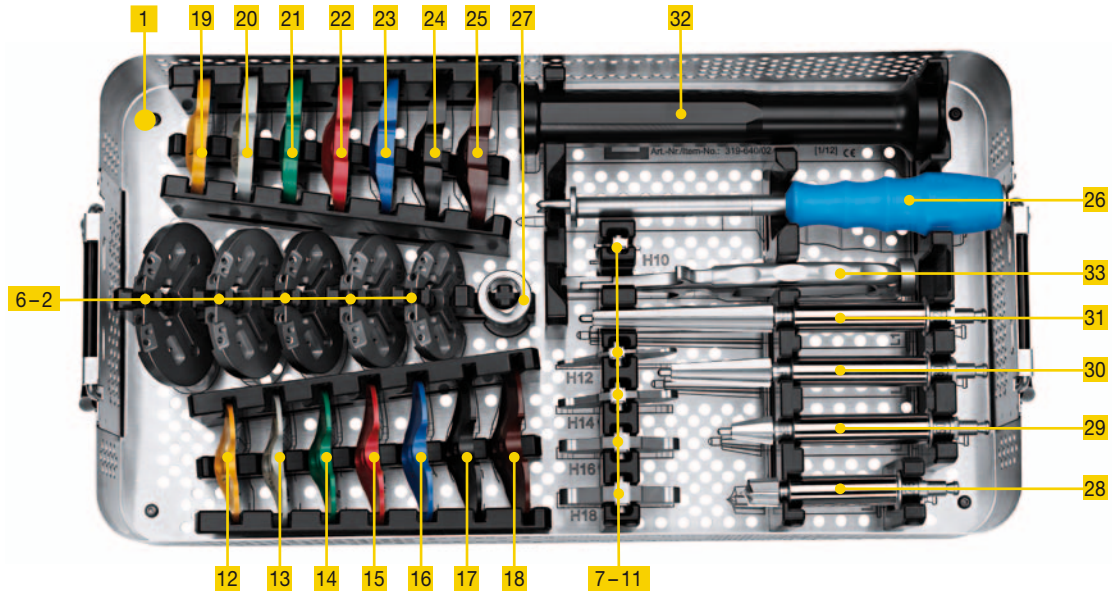
319-030/02 Instrument Tray 3 – Spacers



1	319-630/02	Instrument Tray 3, empty, 485 x 253 x 85 mm
2	319-300/00	Handle
		Spacers for flexion-extension gap
3	319-310/00	Extension „S“
4	319-315/00	Extension „L“
5	319-321/05	Flexion 1
6	319-321/04	Flexion 1B
7	319-321/03	Flexion 2–2A
8	319-321/26	Flexion 2B
9	319-321/02	Flexion 3
10	319-321/16	Flexion 4
11	319-321/01	Flexion 5
12	319-335/00	Correction Spacer
		Shims
13	319-330/12	12 mm
14	319-330/14	14 mm
15	319-330/16	16 mm
16	319-330/18	18 mm

■ **GEMINI® SL® Instrument Set**

319-040/02 Instrument Tray 4 – Tibia Preparation

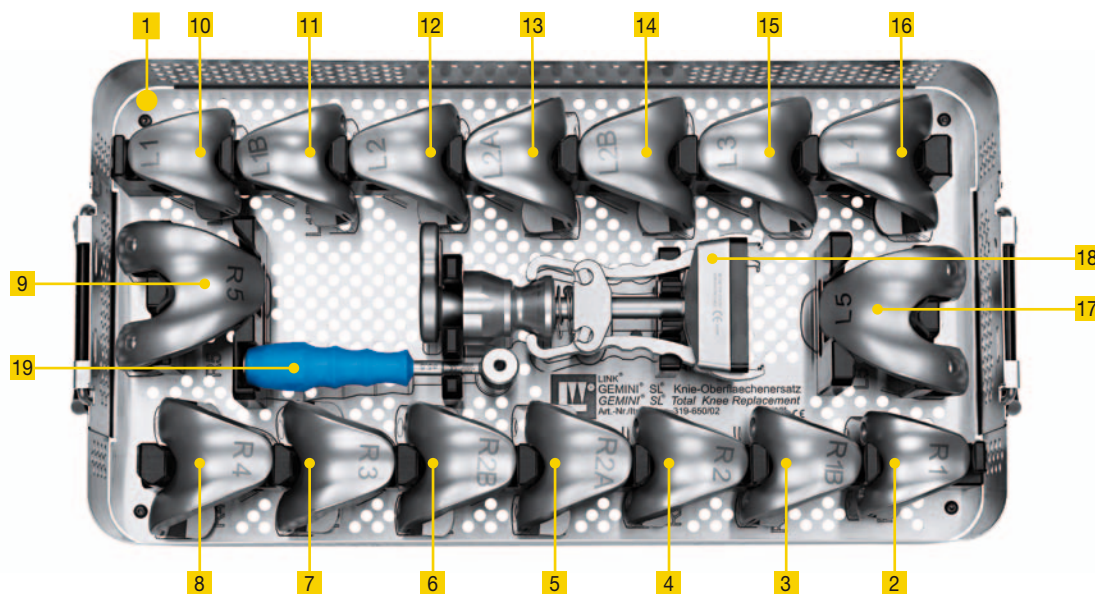


1	319-640/02	Instrument Tray 4, empty, 485 x 253 x 105 mm
Tibial Preparation Plates		
2	319-400/01	Size 1
3	319-400/02	Size 2
4	319-400/03	Size 3
5	319-400/04	Size 4
6	319-400/05	Size 5
Shims		
7	319-406/10	10 mm
8	319-406/12	12 mm
9	319-406/14	14 mm
10	319-406/16	16 mm
11	319-406/18	18 mm
Trial Plateaus – Fixed		
12	319-410/01	Size 1
13	319-410/16	Size 1B
14	319-410/02	Size 2
15	319-410/25	Size 2A/2B
16	319-410/03	Size 3
17	319-410/04	Size 4
18	319-410/05	Size 5
Trial Plateaus – Mobile		
19	319-415/01	Size 1
20	319-415/16	Size 1B
21	319-415/02	Size 2
22	319-415/25	Size 2A/2B
23	319-415/03	Size 3
24	319-415/04	Size 4
25	319-415/05	Size 5
26	319-425/00	Tibial Blade Chisel
27	319-430/00	Guide Sleeve
28	319-436/03	Tapered Reamer (Taper Cap)
29	319-435/05	Tapered Reamer (L 50 mm)
30	319-435/08	Tapered Reamer (L 80 mm)
31	319-435/12	Tapered Reamer (L 120 mm)
32	319-450/00	Impactor Handle for Tibial Component
33	319-570/00	Insertion Forceps

Instruments

GEMINI® SL® Instrument Set

319-050/02 Instrument Tray 5 – Femoral Trial Prostheses



1 319-650/02 Instrument Tray 5, empty, 485 x 253 x 100 mm

Femoral Trials

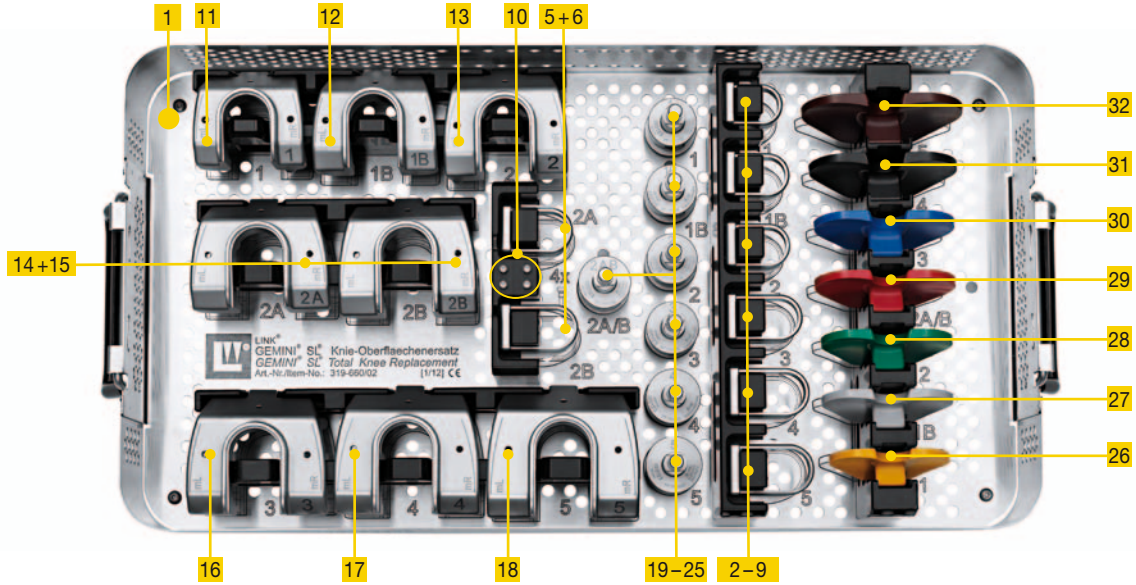
2	317-667/01	Size 1	right
3	317-667/16	Size 1B	right
4	317-667/02	Size 2	right
5	317-667/25	Size 2A	right
6	317-667/26	Size 2B	right
7	317-667/03	Size 3	right
8	317-667/04	Size 4	right
9	317-667/05	Size 5	right
10	317-668/01	Size 1	left
11	317-668/16	Size 1B	left
12	317-668/02	Size 2	left
13	317-668/25	Size 2A	left
14	317-668/26	Size 2B	left
15	317-668/03	Size 3	left
16	317-668/04	Size 4	left
17	317-668/05	Size 5	left

18 319-225/01 Impactor Handle

19 319-550/01 Drill Template

■ **GEMINI® SL® Instrument Set**

319-060/02 Instrument Tray 6 – Femoral PS Preparation



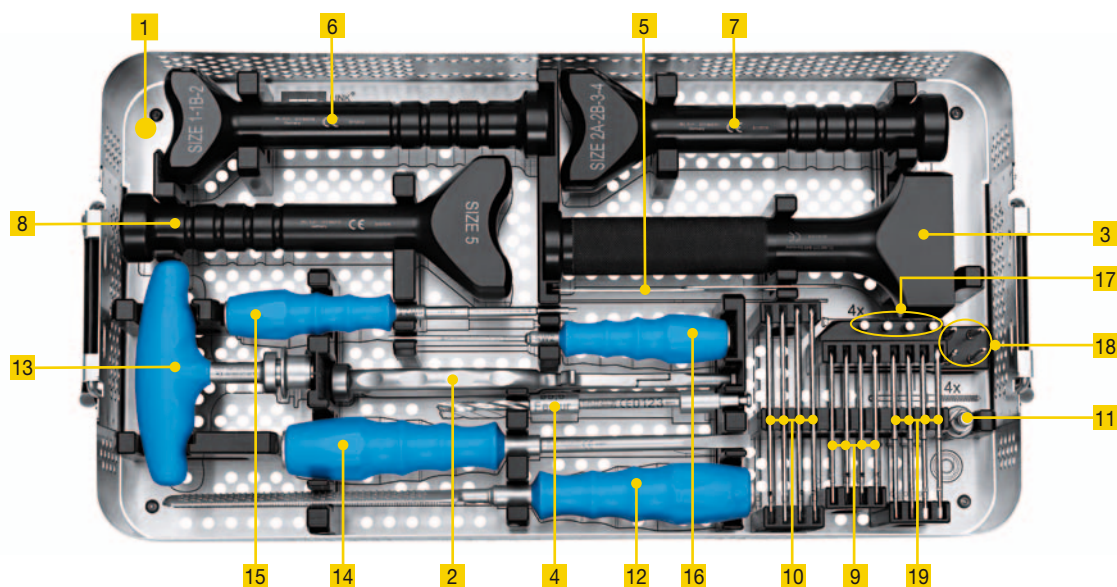
1	319-660/02	Instrument Tray 6 , empty, 485 x 253 x 105 mm
Femoral Trial Boxes		
2	317-669/01	Size 1
3	317-669/16	Size 1B
4	317-669/02	Size 2
5	317-669/25	Size 2A
6	317-669/26	Size 2B
7	317-669/03	Size 3
8	317-669/04	Size 4
9	317-669/05	Size 5
10	317-668	Fixation Screw (4 pieces)
Box Guides		
11	317-618/01	Size 1
12	317-618/16	Size 1B
13	317-618/02	Size 2
14	317-618/25	Size 2A
15	317-618/26	Size 2B
16	317-618/03	Size 3
17	317-618/04	Size 4
18	317-618/05	Size 5
Notch Reamers*		
19	317-717/01B	Size 1
20	317-717/16B	Size 1B
21	317-717/02B	Size 2
22	317-717/25B	Size 2A/B
23	317-717/03B	Size 3
24	317-717/04B	Size 4
25	317-717/05B	Size 5
Trial Plateaus – Fixed PS		
26	319-420/01	Size 1
27	319-420/16	Size 1B
28	319-420/02	Size 2
29	319-420/25	Size 2A/2B
30	319-420/03	Size 3
31	319-420/04	Size 4
32	319-420/05	Size 5

* with fitting **B** = Hudson

■ Instruments

■ GEMINI® SL® Instrument Set

319-070/02 Instrument Tray 7 – General Instruments



1	319-670/02	Instrument Tray 7, empty, 485 x 253 x 105 mm
2	317-586	Inserter/Extraction Forceps
3	317-646	Driver
4	317-649/08B	Twist Drill*
5	317-802/53	Cutting Template
6	317-802/10	Impactor for Tibial Component, incl. PE Plateau, Mobile Bearing Gr. 1+2
7	317-802/11	Impactor for Tibial Component, incl. PE Plateau, Mobile Bearing Gr. 2A, 3, 4
8	317-802/12	Impactor for Tibial Component, incl. PE Plateau, Mobile Bearing Gr. 5
9	317-585/80	Wire Pin (80 mm), 4 pieces
10	317-585/11	Wire Pin (110 mm), 4 pieces
11	16-3287/00B	LINK power tool snap lock adapter
12	319-260/00	Rasp
13	319-500/00	T-Handle
14	319-530/01	Screwdriver
15	319-535/00	Screwdriver, hex. 2.5 mm
16	319-540/00	Screwdriver, hex. 2.0 mm
17	319-555/00	Head Pin, 4 pieces
18	319-560/00	Thread Pin (Ø 3.5 mm), 4 pieces
19	319-565/00	Wire Pin, Ø 3.5 mm with stop (4 pieces)

* with fitting B = Hudson

■ **Additional Instruments** (not included in GEMINI SL Instrument Set)

317-588/01

Gauge for ligament tension



Sawblade,

without offset teeth, 1.24 mm thick

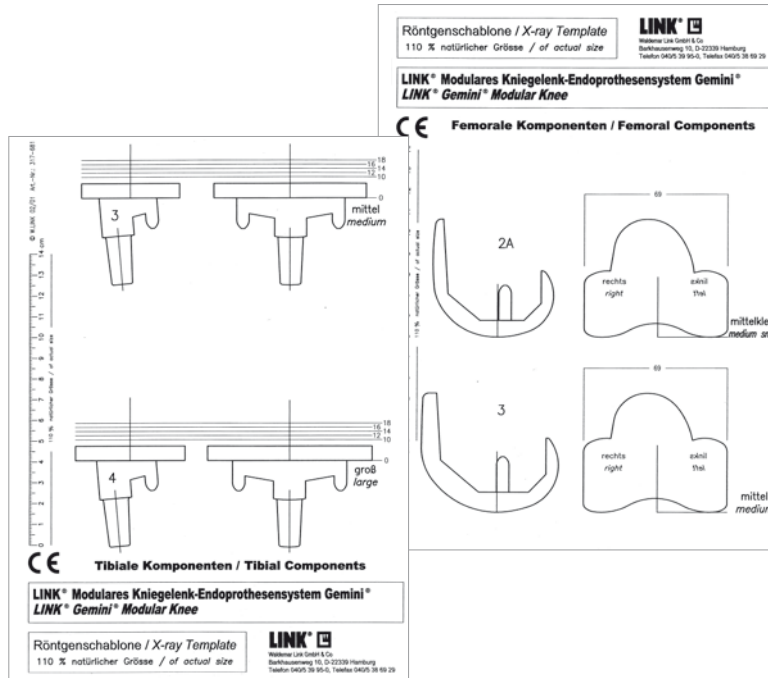
Item no. wide	Item no. small	Fitting
317-654/10	317-656/10	Synthes
317-654/11	317-656/11	Aesculap Kombi
317-654/12	317-656/12	3M
317-654/13	317-656/13	Zimmer / Hall Kombi
317-654/14	317-656/14	Stryker System 4

Accessories

317-684/01

X-ray Templates for GEMINI® SL®,

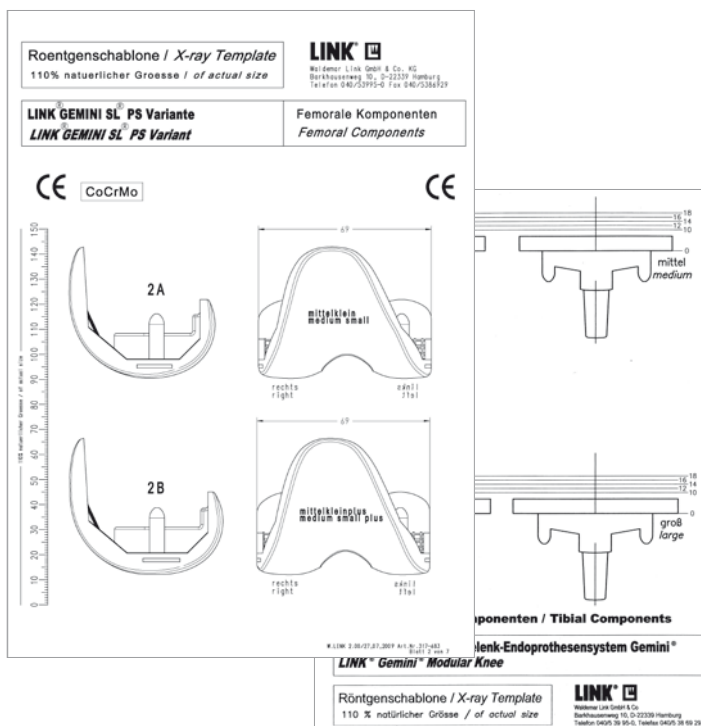
Set contains femoral and tibial implants (Mobile and Fixed Bearing), 110% actual size, 1 set of 7 sheets



317-683/01

X-ray Templates for GEMINI® SL® – PS version,

Set contains femoral and tibial implants PS (Posterior Stabilized), 110% actual size, 1 set of 7 sheets





Further information on:

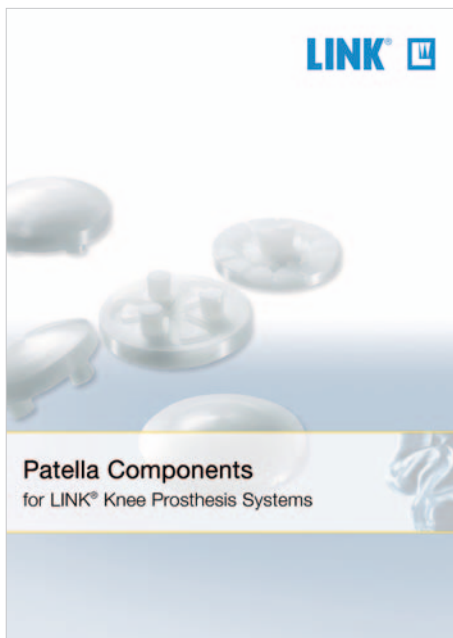
- **GEMINI® SL® – Surgical Technique**

available on request.

Further information on:

- **Patella Components for LINK® Knee Prosthesis Systems**

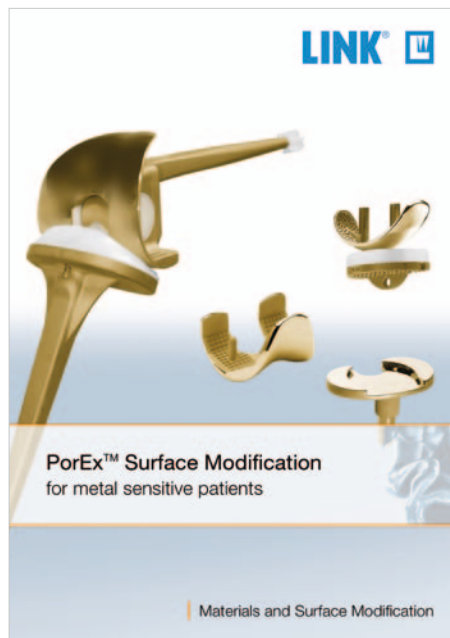
available on request.



Further information on:

- **PorEx™ Surface Modification for metal sensitive patients**

available on request.



Index

16-3287/00B	29	318-113/04	17
317-585/11	29	318-113/05	17
317-585/80	29	318-113/16	17
317-586	29	318-113/25	17
317-618/01	28	318-113/26	17
317-618/02	28	318-190/07	21
317-618/03	28	318-190/10	21
317-618/04	28	318-190/14	21
317-618/05	28	318-191/07	21
317-618/16	28	318-191/10	21
317-618/25	28	318-191/14	21
317-618/26	28	318-204/01	10
317-646	29	318-204/02	10
317-649/08B	29	318-204/03	10
317-654/10	30	318-204/04	10
317-654/11	30	318-204/05	10
317-654/12	30	318-204/16	10
317-654/13	30	318-204/25	10
317-654/14	30	318-204/26	10
317-656/10	30	318-205/01	10
317-656/11	30	318-205/02	10
317-656/12	30	318-205/03	10
317-656/13	30	318-205/04	10
317-656/14	30	318-205/05	10
317-667/01	27	318-205/16	10
317-667/02	27	318-205/25	10
317-667/03	27	318-205/26	10
317-667/04	27	318-206/01	10
317-667/05	27	318-206/02	10
317-667/16	27	318-206/03	10
317-667/25	27	318-206/04	10
317-667/26	27	318-206/05	10
317-668	28	318-206/16	10
317-668/01	27	318-206/25	10
317-668/02	27	318-206/26	10
317-668/03	27	318-207/01	10
317-668/04	27	318-207/02	10
317-668/05	27	318-207/03	10
317-668/16	27	318-207/04	10
317-668/25	27	318-207/05	10
317-668/26	27	318-207/16	10
317-669/01	28	318-207/25	10
317-669/02	28	318-207/26	10
317-669/03	28	318-208/01	10
317-669/04	28	318-208/02	10
317-669/05	28	318-208/03	10
317-669/16	28	318-208/04	10
317-669/25	28	318-208/05	10
317-669/26	28	318-208/16	10
317-717/01B	28	318-208/25	10
317-717/02B	28	318-208/26	10
317-717/03B	28	318-209/01	10
317-717/04B	28	318-209/02	10
317-717/05B	28	318-209/03	10
317-717/16B	28	318-209/04	10
317-717/25B	28	318-209/05	10
317-802/10	29	318-209/16	10
317-802/11	29	318-209/25	10
317-802/12	29	318-209/26	10
317-802/53	29	318-212/01	17
318-102/01	10	318-212/02	17
318-102/02	10	318-212/03	17
318-102/03	10	318-212/04	17
318-102/04	10	318-212/05	17
318-102/05	10	318-212/16	17
318-102/16	10	318-212/25	17
318-102/25	10	318-212/26	17
318-102/26	10	318-213/01	17
318-103/01	10	318-213/02	17
318-103/02	10	318-213/03	17
318-103/03	10	318-213/04	17
318-103/04	10	318-213/05	17
318-103/05	10	318-213/16	17
318-103/16	10	318-213/25	17
318-103/25	10	318-213/26	17
318-103/26	10	318-214/01	17
318-112/01	17	318-214/02	17
318-112/02	17	318-214/03	17
318-112/03	17	318-214/04	17
318-112/04	17	318-214/05	17
318-112/05	17	318-214/16	17
318-112/16	17	318-214/25	17
318-112/25	17	318-214/26	17
318-112/26	17	318-215/01	17
318-113/01	17	318-215/02	17
318-113/02	17	318-215/03	17
318-113/03	17		

System Description

Indications
Contraindications

Implants

Instruments

Accessories
Literature

Index

318-215/04	17	318-248/12	15
318-215/05	17	318-248/14	16
318-215/16	17	318-248/16	16
318-215/25	17	318-248/18	16
318-215/26	17	318-251/10	18
318-216/01	17	318-251/12	18
318-216/02	17	318-251/14	19
318-216/03	17	318-251/16	19
318-216/04	17	318-251/18	19
318-216/05	17	318-252/10	18
318-216/16	17	318-252/12	18
318-216/25	17	318-252/14	19
318-216/26	17	318-252/16	19
318-217/01	17	318-252/18	19
318-217/02	17	318-253/10	18
318-217/03	17	318-253/12	18
318-217/04	17	318-253/14	19
318-217/05	17	318-253/16	19
318-217/16	17	318-253/18	19
318-217/25	17	318-254/10	18
318-217/26	17	318-254/12	18
318-231/10	15	318-254/14	19
318-231/12	15	318-254/16	19
318-231/14	15	318-254/18	19
318-231/16	16	318-255/10	18
318-231/18	16	318-255/12	18
318-232/10	15	318-255/14	19
318-232/12	15	318-255/16	19
318-232/14	15	318-255/18	19
318-232/16	16	318-256/10	18
318-232/18	16	318-256/12	18
318-233/10	15	318-256/14	19
318-233/12	15	318-256/16	19
318-233/14	15	318-256/18	19
318-233/16	16	318-258/10	18
318-233/18	16	318-258/12	18
318-234/10	15	318-258/14	19
318-234/12	15	318-258/16	19
318-234/14	15	318-258/18	19
318-234/16	16	318-261/10	18
318-234/18	16	318-261/12	18
318-235/10	15	318-261/14	19
318-235/12	15	318-261/16	19
318-235/14	15	318-261/18	19
318-235/16	16	318-262/10	18
318-235/18	16	318-262/12	18
318-237/10	15	318-262/14	19
318-237/12	15	318-262/16	19
318-237/14	15	318-262/18	19
318-237/16	16	318-263/10	18
318-237/18	16	318-263/12	18
318-238/10	15	318-263/14	19
318-238/12	15	318-263/16	19
318-238/14	15	318-263/18	19
318-238/16	16	318-264/10	18
318-238/18	16	318-264/12	18
318-241/10	15	318-264/14	19
318-241/12	15	318-264/16	19
318-241/14	16	318-264/18	19
318-241/16	16	318-265/10	18
318-241/18	16	318-265/12	18
318-242/10	15	318-265/14	19
318-242/12	15	318-265/16	19
318-242/14	16	318-265/18	19
318-242/16	16	318-266/10	18
318-242/18	16	318-266/12	18
318-243/10	15	318-266/14	19
318-243/12	15	318-266/16	19
318-243/14	16	318-266/18	19
318-243/16	16	318-268/10	18
318-243/18	16	318-268/12	18
318-244/10	15	318-268/14	19
318-244/12	15	318-268/16	19
318-244/14	16	318-268/18	19
318-244/16	16	318-312/01	11
318-244/18	16	318-312/02	11
318-245/10	15	318-312/03	11
318-245/12	15	318-312/04	11
318-245/14	16	318-312/05	11
318-245/16	16	318-313/01	11
318-245/18	16	318-313/02	11
318-247/10	15	318-313/03	11
318-247/12	15	318-313/04	11
318-247/14	16	318-313/05	11
318-247/16	16	318-314	20
318-247/18	16	318-314/01	20
318-248/10	15	318-315	20

318-316/01	11	318-403/16	10
318-316/02	11	318-403/25	10
318-316/03	11	318-403/26	10
318-316/04	11	318-412/01	17
318-316/05	11	318-412/02	17
318-317/01	11	318-412/03	17
318-317/02	11	318-412/04	17
318-317/03	11	318-412/05	17
318-317/04	11	318-412/16	17
318-317/05	11	318-412/25	17
318-324/01	11	318-412/26	17
318-324/02	11	318-413/01	17
318-324/03	11	318-413/02	17
318-324/04	11	318-413/03	17
318-324/05	11	318-413/04	17
318-325/01	11	318-413/05	17
318-325/02	11	318-413/16	17
318-325/03	11	318-413/25	17
318-325/04	11	318-413/26	17
318-325/05	11	318-431/12	12
318-326/01	11	318-431/14	12
318-326/02	11	318-431/16	12
318-326/03	11	318-431/18	13
318-326/04	11	318-432/12	12
318-326/05	11	318-432/14	12
318-327/01	11	318-432/16	12
318-327/02	11	318-432/18	13
318-327/03	11	318-433/12	12
318-327/04	11	318-433/14	12
318-327/05	11	318-433/16	12
318-328/01	14	318-433/18	13
318-328/02	14	318-434/12	12
318-328/03	14	318-434/14	12
318-328/04	14	318-434/16	12
318-328/05	14	318-434/18	13
318-329/01	14	318-435/12	12
318-329/02	14	318-435/14	12
318-329/03	14	318-435/16	12
318-329/04	14	318-435/18	13
318-329/05	14	318-437/12	12
318-336/01	14	318-437/14	12
318-336/02	14	318-437/16	12
318-336/03	14	318-437/18	13
318-336/04	14	318-438/12	12
318-336/05	14	318-438/14	12
318-337/01	14	318-438/16	12
318-337/02	14	318-438/18	13
318-337/03	14	318-441/12	12
318-337/04	14	318-441/14	12
318-337/05	14	318-441/16	13
318-372/01	14	318-441/18	13
318-372/02	14	318-442/12	12
318-372/03	14	318-442/14	12
318-372/04	14	318-442/16	13
318-372/05	14	318-442/18	13
318-373/01	14	318-443/12	12
318-373/02	14	318-443/14	12
318-373/03	14	318-443/16	13
318-373/04	14	318-443/18	13
318-373/05	14	318-444/12	12
318-376/01	14	318-444/14	12
318-376/02	14	318-444/16	13
318-376/03	14	318-444/18	13
318-376/04	14	318-445/12	12
318-376/05	14	318-445/14	12
318-377/01	14	318-445/16	13
318-377/02	14	318-445/18	13
318-377/03	14	318-447/12	12
318-377/04	14	318-447/14	12
318-377/05	14	318-447/16	13
318-401/25	20	318-447/18	13
318-401/28	20	318-448/12	12
318-401/31	20	318-448/14	12
318-401/34	20	318-448/16	13
318-402/01	10	318-448/18	13
318-402/02	10	318-452/01	11
318-402/03	10	318-452/02	11
318-402/04	10	318-452/03	11
318-402/05	10	318-452/04	11
318-402/16	10	318-452/05	11
318-402/25	10	318-453/01	11
318-402/26	10	318-453/02	11
318-403/01	10	318-453/03	11
318-403/02	10	318-453/04	11
318-403/03	10	318-453/05	11
318-403/04	10	318-482/01	14
318-403/05	10	318-482/02	14

System Description

Indications
Contraindications

Implants

Instruments

Accessories
Literature

Index

318-482/03	14	319-430/00	26
318-482/04	14	319-435/05	26
318-482/05	14	319-435/08	26
318-483/01	14	319-435/12	26
318-483/02	14	319-436/03	26
318-483/03	14	319-450/00	26
318-483/04	14	319-500/00	29
318-483/05	14	319-505/00B	24
319-010/02	22	319-510/00	24
319-020/02	22	319-520/01	23
319-030/02	22	319-525/00	23
319-040/02	22	319-530/01	29
319-050/02	22	319-535/00	29
319-060/02	22	319-540/00	29
319-070/02	22	319-550/01	27
319-100/01	23	319-555/00	29
319-105/00	23	319-560/00	29
319-110/11	23	319-565/00	29
319-115/01	23	319-570/00	26
319-120/01	23	319-610/02	23
319-125/01	23	319-620/02	24
319-130/01	23	319-630/02	25
319-135/01	23	319-640/02	26
319-140/01	23	319-650/02	27
319-145/01	23	319-660/02	28
319-150/01	23		
319-155/01	23		
319-160/00	23		
319-165/00	23		
319-200/01	24		
319-202/01	24		
319-202/02	24		
319-202/03	24		
319-202/04	24		
319-202/05	24		
319-202/16	24		
319-202/25	24		
319-202/26	24		
319-210/00	24		
319-211/01	24		
319-215/00	24		
319-220/00	24		
319-225/01	27		
319-260/00	29		
319-310/00	25		
319-310/00	25		
319-315/00	25		
319-321/01	25		
319-321/02	25		
319-321/03	25		
319-321/04	25		
319-321/05	25		
319-321/16	25		
319-321/26	25		
319-335/00	25		
319-400/01	26		
319-400/02	26		
319-400/03	26		
319-400/04	26		
319-400/05	26		
319-406/10	26		
319-406/12	26		
319-406/14	26		
319-406/16	26		
319-406/18	26		
319-410/01	26		
319-410/02	26		
319-410/03	26		
319-410/04	26		
319-410/05	26		
319-410/16	26		
319-410/25	26		
319-415/01	26		
319-415/02	26		
319-415/03	26		
319-415/04	26		
319-415/05	26		
319-415/16	26		
319-415/25	26		
319-420/01	28		
319-420/02	28		
319-420/03	28		
319-420/04	28		
319-420/05	28		
319-420/16	28		
319-420/25	28		
319-425/00	26		

■ Important Information

Please note the following regarding the use of our implants:

1. Choosing the right implant is very important.

The size and shape of the human bone determine the size and shape of the implant and also limit the load capacity. Implants are not designed to withstand unlimited physical stress. Demands should not exceed normal functional loads.

2. Correct handling of the implant is very important.

Under no circumstances should the shape of a finished implant be altered, as this shortens its life span. Our implants must not be combined with implants from other manufacturers.

The instruments indicated in the Surgical Technique must be used to ensure safe implantation of the components.

3. Implants must not be reused.

Implants are supplied sterile and are intended for single use only. Used implants must not be reused.

4. After-treatment is also very important.

The patient must be informed of the limitations of the implant. The load capacity of an implant cannot compare with that of healthy bone!

5. Unless otherwise indicated, implants are supplied in sterile packaging.

Note the following conditions for storage of packaged implants:

- Avoid extreme or sudden changes in temperature.
- Sterile implants in their original, intact protective packaging may be stored in permanent buildings up until the "Use by" date indicated on the packaging.
- They must not be exposed to frost, dampness or direct sunlight, or mechanical damage.
- Implants may be stored in their original packaging for up to 5 years after the date of manufacture. The "Use by" date is indicated on the product label.
- Do not use an implant if the packaging is damaged.

6. Traceability is important.

Please use the documentation stickers provided to ensure traceability.

7. Further information on the material composition is available on request from the manufacturer.

Follow the instructions for use!

Waldemar Link GmbH & Co. KG, Hamburg

All content in this catalog, including text, pictures and data, is protected by law. Every instance of use, whether in part or in whole and which is not permitted by law, is subject to our prior consent. In particular, this applies to the reproduction, editing, translation, publishing, saving, processing, or passing on of content stored in databases or other electronic media and systems, in any manner or form. The information in the catalogs is solely intended to describe the products and does not constitute a guarantee.

The Surgical Technique described has been written to the best of our knowledge and belief, but it does not relieve the surgeon of his/her responsibility to duly consider the particularities of each individual case.

Unless otherwise indicated, all instruments are made of surgical stainless steel.



Waldemar Link GmbH & Co. KG

Barkhausenweg 10 · 22339 Hamburg, Germany
P.O. Box 63 05 52 · 22315 Hamburg, Germany
Tel.: +49 40 53995-0 · Fax: +49 40 5386929
E-mail: info@linkhh.de · www.linkorthopaedics.com

